

Neighbourhood 2

Local Park 9 - Concept Plan

Key

- 1 Hilltop lookout and seating area
- 2 1.5m wide accessible pathway
- 3 Terraced gabion walls (maximum 0.9m in height) with groundcover planting / grasses
- 4 Dog park equipment
- 5 Dog park fencing
- 6 Dog park gated access with associated bins and signage
- 7 Dryland grass - maximum grade 1:4
- 8 Seating beneath trees
- 9 2m key path
- 10 Screening hedge to property boundary

Trees

- T1 *Pyrus calleryana* 'Chanticleer'
- T2 *Eucalyptus polyanthemos*, *mellidora*, *mannifera*
- T3 *Olea europea* 'Swan Hill'
- T4 *Eucalyptus polyanthemos* (street tree)
- T5 *Prunus cerasifera* 'Oakville Crimson Spire' (street tree)



G	Development Application	28.09.17	AJ
F	Development Application	22.03.17	JB
E	Development Application	15.03.17	JB
D	Development Application	20.02.17	JB
C	90% Draft - For Review	25.01.17	JB
B	Draft - For Review	12.01.17	JB
A	Draft - For Review	21.12.16	JB
no.	revision	date	initial

Title	Googong Neighbourhood 2 Development Application
-------	--

Prepared for	Googong Township Pty Ltd
Prepared by	AECOM

Date	28.09.17
Size	A1
Drawing no.	L023
Scale	1:250@A1



Neighbourhood 2

Local Park 9  
Planting and Landscape Character

Key	
A	1.5m wide accessible pathway
B	Pyrus calleryana 'Chanticleer'
C	Dryland grass - maximum grade 1:4
D	Hilltop lookout and seating area
E	Olea Europea 'Swan Hill'

AECOM

G	Development Application	28.09.17	AJ
F	Development Application	22.03.17	JB
E	Development Application	15.03.17	JB
D	Development Application	20.02.17	JB
C	90% Draft - For Review	25.01.17	JB
B	Draft - For Review	12.01.17	JB
A	Draft - For Review	21.12.16	JB
no.	revision	date	initial

Title	Googong Neighbourhood 2 Development Application
Prepared for	Googong Township Pty Ltd
Prepared by	AECOM
Date	28.09.17
Size	A1
Drawing no.	L024
Scale	-

Planting Schedule

BOTANICAL NAME	COMMON NAME	POT SIZE	MATURE HEIGHT	MATURE SPREAD
Exotic				
Trees				
<i>Olea europaea</i> 'Swan Hill'	Swan Hill Fruitless Olive	100L	9	9
<i>Prunus cerasifera</i> 'Oakville Crimson Spire'	Crimson Spire Cherry	100L	6	2
<i>Pyrus calleryana</i> 'Chanticleer'	Ornamental Pear	100L	11	3
Shrubs and groundcovers				
<i>Juniperus conferta</i>	Groundcover Juniper	150mm	0.5	Spreading
Native				
Trees				
<i>Eucalyptus mannifera</i> ssp. <i>Maculosa</i>	Red Spotted Gum	300mm anti spiral	20	10
<i>Eucalyptus melliodora</i>	Yellow Box	300mm anti spiral	30	15
<i>Eucalyptus polyanthemos</i>	Red Box	300mm anti spiral	20	10
Shrubs and groundcovers				
<i>Hardenbergia violacea</i>	False Sarsparilla	150mm	0.5	0.6
Grasses				
<i>Lomandra</i> 'Nyalla'	Nyalla Mat Rush	150mm	0.7	0.2
<i>Lomandra</i> 'Tanika'	Tanika Mat Rush	150mm	0.5	0.6
<i>Poa poiformis</i> 'Kingsdale'	Kingsdale	150mm	0.5	0.5
Turf				
Canberra Blend	Turf		N/A	N/A
Standard Dryland Grass	Turf/Verge	Seed	N/A	N/A



Section I-I 1:50

Character



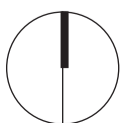
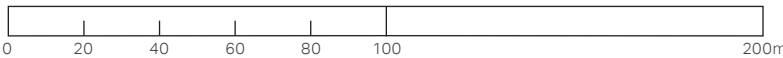
Materials



Planting



- 1 Hilltop seating
- 6 'Run-around' lawn
- 11 *Pyrus calleryana* 'Chanticleer'
- 2 Screening hedge
- 7 Dog park equipment
- 12 *Eucalyptus polyanthemos*
- 3 Dryland grass
- 8 Existing rock strikes
- 13 *Hardenbergia violacea*
- 4 Off Leash Area
- 9 Dog park fencing
- 14 *Lomandra* 'Tanika'
- 5 Hilltop Lookout
- 10 Terraced gabion wall
- 15 *Juniperus conferta*



Neighbourhood 2

Googong Common and Riparian Corridor - Overall Plan

Key

<b>B1</b>	Indoor Recreation Centre (to future D.A.)
<b>B2</b>	Area designed for Club / Amenity Building for Sportsfields 3 and 4 (to future D.A.)
<b>B3</b>	Amenity Building for Sportsfield 5 (166sqm)
<b>B4</b>	Amenity Building for Tennis Club and Sportsfield 6 (166sqm)
<b>S3</b>	Sportsfield 3 (S3) - AFL co-use with international cricket. Irrigated floodlit.
<b>S4</b>	Sportsfield 4 (S4) - Double Soccer co-use with International Cricket / Rugby League. Irrigated floodlit.
<b>S5</b>	Sportsfield 5 (S5) - Double soccer co-use with Rugby League. Irrigated floodlit.
<b>S6</b>	Sportsfield 6 (S6) - Single Soccer co-use with Rugby League
<b>NT</b>	6 Netball Courts with access to amenities in the Indoor Recreation Centre. Floodlit.
<b>CN</b>	Double Cricket Nets - possible location
<b>T</b>	8 Tennis Courts (2 competition / 6 recreation) with hitting wall. Floodlit.
<b>M</b>	Multi- Activity Games Arena (MUGA)
<b>L5</b>	Local Playground 05 - Suitable for ages 5-12
<b>L6</b>	Local Playground 06 - Suitable for ages 5-12
<b>CG</b>	Potential Community Garden or BMX track
<b>RC</b>	Riparian Corridor
<b>L</b>	Bus layby



G	Development Application	28.09.17	AJ
F	Development Application	22.03.17	JB
E	Development Application	15.03.17	JB
D	Development Application	20.02.17	JB
C	90% Draft - For Review	25.01.17	JB
B	Draft - For Review	12.01.17	JB
A	Draft - For Review	21.12.16	JB
no.	revision	date	initial

Title	Googong Neighbourhood 2 Development Application
-------	---

Prepared for	Googong Township Pty Ltd
Prepared by	AECOM

Date	28.09.17
Size	A1
Drawing no.	L025
Scale	1:2,000@A1



Key

Buildings

- B1** Indoor Recreation Centre (to future D.A.)
- B2** Club / Amenity Building for Sportsfields 3 and 4 (to future D.A.)
- A1** Red line showing extent of 20,000 sqm dedicated to the Indoor Recreation Centre
- A2** Red line showing extent of 4000sqm dedicated to club/amenity building

Car parking

- C1** 120 space off street car park for Indoor Recreation Centre, netball courts and Sportsfield 3
- C2** 76 space parallel on street car parking for Indoor Recreation Centre, netball courts and Sportsfield 3
- C3** 60 space off street car park for Club, Sportsfield 3 and Sportsfield 4
- C4** Parallel indented on street parking for Sportsfield 3
- C5** Parallel indented on street parking for Sportsfield 4

Sports Facilities

- S3** Sportsfield 3 (S3) - AFL co-use with international cricket. Irrigated and floodlit
- S4** Sportsfield 4 (S4) - Double soccer co-use with international single synthetic cricket pitch / Rugby League. Irrigated and floodlit
- NT** 6 Netball Courts with access to amenities in the Indoor Recreation Centre. Floodlit
- CN** Double cricket nets - possible location

Recreation Facilities

- L5** Local Playground 05 - Suitable for ages 5-12

Riparian Corridor

- R1** Swampy Meadow
- R2** Vegetated Riparian Zone (20m either side of R1 where possible For detailed offset drawings refer Calibre Engineering drawings.

Water Quality

- Q9** Bioretention Basin 9

Access

- P1** 2.5m wide concrete share path
- P2** 2.0m wide concrete key path
- P3** Entry Plaza with feature paving, planting, shade trees, signage and seating
- BD** 2.0m wide boardwalk over creek
- Z** Pedestrian crossing
- L** Bus layby - indicative location

Services

- SE** Sewer main - indicative alignment
- SB** Electrical substation - indicative location

Trees

- T1** Acer freemanii 'Autumn Blaze'
- T2** Pinus radiata
- T3** Betula pendula
- T4** Malus spectabilis
- T5** Fraxinus 'Raywood'
- T6** Eucalyptus sp. in informal groupings
- T7** Melaleuca ericifolia and Melaleuca stypheloides

Heritage

- \*** Aboriginal artefact to be salvaged and relocated on site



Neighbourhood 2

Googong Common and Riparian Corridor - North



G	Development Application	28.09.17	AJ
F	Development Application	22.03.17	JB
E	Development Application	15.03.17	JB
D	Development Application	20.02.17	JB
C	90% Draft - For Review	25.01.17	JB
B	Draft - For Review	12.01.17	JB
A	Draft - For Review	21.12.16	JB
no.	revision	date	initial

Title Googong Neighbourhood 2  
Development Application

Prepared for Googong Township Pty Ltd  
Prepared by AECOM

Date 28.09.17  
Size A1  
Drawing no. L026  
Scale 1:1,000@A1



- Trees**
- T1 Acer freemanii 'Autumn Blaze'
  - T2 Pinus radiata
  - T3 Betula pendula
  - T4 Malus spectabilis
  - T5 Fraxinus 'Raywood'
  - T6 Eucalyptus sp. in informal groupings
  - T7 Melaleuca ericifolia and Melaleuca styphelloides



**Key**

**Buildings**

- B3 Amenity Building for Sportsfields 5
- B4 Amenity Building for Tennis Club and Sportsfield 6

**Car parking**

- C6 80 space off street car park for Tennis Club, Sportsfield 5 and Sportsfield 6
- C7 Parallel indented on street parking for Sportsfield 5
- C8 Parallel indented on street parking for Community Hub

**Sports Facilities**

- S5 Sportsfield 5 (S5) - Double soccer co-use with Rugby League and single synthetic cricket pitch. Irrigated and floodlit.
- S6 Sportsfield 6 (S6) - Single soccer co-use with Rugby League. Irrigated and floodlit.
- T 8 Tennis Courts (2 competition / 6 recreation) with hitting wall. Floodlit.

**Recreation Facilities**

- L6 Local Playground 06 - Suitable for ages 5-12
- M Multi Activity Games Arena (MUGA)
- CG Community garden / BMX track

**Riparian Corridor**

- R1 Swampy Meadow
- R2 Vegetated Riparian Zone (20m either side of R1 where possible). For detailed offset drawings refer Calibre Engineering drawings.

**Water Quality**

- Q5 Bioretention Basin 5
- Q7 Bioretention Basin 7
- Q8 Bioretention Basin 8B (not in this DA)
- Q6 Bioretention Basin 6 (not in this DA)

**Access**

- P1 2.5m wide concrete share path
- P2 2.0m wide concrete key path
- BD 2.0m wide boardwalk over creek
- Z Pedestrian crossing

**Services**

- SE Sewer main - indicative alignment

**Heritage**

- \* Aboriginal artefact to be salvaged and relocated on site



Neighbourhood 2

Googong Common and Riparian Corridor - South

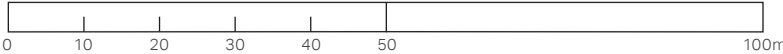


D	Development Application	20.02.17	JB
C	90% Draft - For Review	25.01.17	JB
B	Draft - For Review	12.01.17	JB
A	Draft - For Review	21.12.16	JB
no.	revision	date	initial

Title Googong Neighbourhood 2 Development Application

Prepared for Googong Township Pty Ltd  
Prepared by AECOM

Date 27.09.17  
Size A1  
Drawing no. L027  
Scale 1:1,000@A1





Neighbourhood 2

Googong Common and Riparian Corridor - Sections



Typical Section J-J: Googong Common North 1:500

KEY		
<b>A</b>	2m key path	<b>E</b> Sportsfield 3
<b>B</b>	Wellsville Drive	<b>F</b> Playground area
<b>C</b>	Median strip	<b>G</b> 2.5m share path
<b>D</b>	2.5m share path	<b>H</b> Bioretention Basin
		<b>I</b> Landscape batter max 1:4
		<b>J</b> Swampy meadow / riparian corridor



Typical Section K-K: Googong Common South 1:500

KEY		
<b>A</b>	Pedestrian pathway	<b>E</b> Tennis courts
<b>B</b>	Carpark	<b>F</b> Shaded seating area
<b>C</b>	Amenity building for sportsfield	<b>G</b> Bioretention Basin
<b>D</b>	Shelter and seating area	<b>H</b> Landscape batter
		<b>I</b> 2m pedestrian pathway
		<b>J</b> Swampy meadow / riparian corridor



G	Development Application	28.09.17	AJ
F	Development Application	22.03.17	JB
E	Development Application	15.03.17	JB
D	Development Application	20.02.17	JB
C	90% Draft - For Review	25.01.17	JB
B	Draft - For Review	12.01.17	JB
A	Draft - For Review	21.12.16	JB
no.	revision	date	initial

Title	Googong Neighbourhood 2 Development Application
-------	--

Prepared for	Googong Township Pty Ltd
Prepared by	AECOM

Date	28.09.17
Size	A1
Drawing no.	L028
Scale	1:500@A1



Neighbourhood 2

Googong Common and Riparian  
Corridor  
Planting and Landscape Character

AECOM

G	Development Application	28.09.17	AJ
F	Development Application	22.03.17	JB
E	Development Application	15.03.17	JB
D	Development Application	20.02.17	JB
C	90% Draft - For Review	25.01.17	JB
B	Draft - For Review	12.01.17	JB
A	Draft - For Review	21.12.16	JB
no.	revision	date	initial

Title	Googong Neighbourhood 2 Development Application
-------	--

Prepared for	Googong Township Pty Ltd
Prepared by	AECOM

Date	28.09.17
Size	A1
Drawing no.	L029
Scale	-

Planting Schedule

BOTANICAL NAME	COMMON NAME	POT SIZE	MATURE HEIGHT	MATURE SPREAD
Exotic				
Trees				
<i>Acer x freemanii</i> 'Autumn Blaze'	Freeman Maple	100L	13	10
<i>Betula pendula</i>	Silver Birch	100L	15	6
<i>Fraxinus oxycarpa</i> 'Raywood'	Claret Ash	100L	12	7
<i>Fraxinus pennsylvanica</i>	Green Ash	100L	15	8
<i>Magnolia grandiflora</i>	Bull Bay Magnolia	100L	10	5
<i>Malus spectabilis</i>	Chinese Crab Apple	100L	5	3
<i>Pinus radiata</i>	Radiata Pine	100L	15	5
Shrubs and groundcovers				
<i>Hebe 'Inspiration'</i>	Inspiration Hebe	150mm	0.7	0.7
<i>Gazania tomentosum</i>	Gazania	150mm	0.2	0.7
<i>Lavandula angustifolia</i>	English Lavendar	150mm	1	1
Native				
Trees				
<i>Casuarina cunninghamiana</i>	River She Oak	100L	10	5
<i>Eucalyptus melliodora</i>	Yellow Box	300mm anti spiral	30	15
<i>Eucalyptus elata</i>	River Peppermint	300mm anti spiral	25-30	15
<i>Eucalyptus nicholii</i>	Narrow-leaved Peppermint	300mm anti spiral	12	10
<i>Eucalyptus polyanthemos</i>	Red Box	300mm anti spiral	20	10
<i>Melaleuca ericifolia</i>	Swamp Paperbark	300mm anti spiral	8	4
<i>Melaleuca styphelioides</i>	Prickly Leaved Paperbark	300mm anti spiral	8	4
<i>Eucalyptus albens</i>	White Box	300mm anti spiral	20	10
<i>Eucalyptus blakelyi</i>	Blakely's red Gum	300mm anti spiral	20	10
Shrubs and groundcovers				
<i>Chrysocephalum apiculatum</i>	Yellow Buttons	150mm	0.6	0.5
<i>Grevillea langira</i> 'Mt Tamboritha'	Grevillea langera 'Mt Tamboritha'	150mm	0.3	1
<i>Hardenbergia violacea</i>	False Sarsparilla	150mm	0.5	0.6
<i>Westringia 'Jervis Gem'</i>	Jervis Gem Westringia	150mm	1	1.5

BOTANICAL NAME	COMMON NAME	POT SIZE	MATURE HEIGHT	MATURE SPREAD
Grasses				
<i>Austrodranthonia caespitosa</i>	Common Wallaby Grass	Viro tube	0.5	0.1
<i>Dianella revoluta</i>	Blue Flax Lily	Viro tube	0.5	0.5
<i>Imperata cylindrica</i>	Blady grass	Viro tube	1	1
<i>Lomandra longifolia</i>	Spiny Mat Rush	Viro tube	1	1
<i>Lomandra 'Tanika'</i>	Tanika Mat Rush	Viro tube	0.5	0.6
<i>Poa labillardieri</i>	Tussock Grass	Viro tube	0.5	0.1
<i>Stypandra glauca</i>	Nodding Blue Lily	Viro tube	0.3	0.4
<i>Themeda australis</i>	Kangaroo Grass	Viro tube	1.2	0.6
Riparian Corridor / Chain of Ponds				
<i>Carex appressa</i>	Saw Sedge	Viro tube	1	0.6
<i>Ficinia nodosa</i>	Knobby Club Rush	Viro tube	1.5	1
<i>Juncus usitatus</i>	Common Rush	Viro tube	1	Spreading
<i>Poa labillardierei</i>	Tussock Grass	Viro tube	0.8	0.6
<i>Themeda australis</i>	Kangaroo Grass	Viro tube	1.2	0.6
Bioretention basins				
<i>Atriplex semibaccata</i>	Creeping Salt Bush	Viro tube	0.2	1.5
<i>Austrodranthonia caespitosa</i>	Common Wallaby Grass	Viro tube	0.5	0.1
<i>Carex appressa</i>	Saw Sedge	Viro tube	0.8	0.6
<i>Chrysocephalum apiculatum</i>	Yellow Buttons	Viro tube	0.4	Spreading
<i>Dianella revoluta</i>	Black Anther Flax Lily	Viro tube	0.8	0.5
<i>Dichelachne micrantha</i>	Short Hair Plume Grass	Viro tube	1.25	0.3
<i>Ficinia nodosa</i>	Knobby Club Rush	Viro tube	1	1
<i>Imperata cylindrica</i>	Blady grass	Viro tube	1	1
<i>Juncus usitatus</i>	Common Rush	Viro tube	1	0.7
<i>Microlaena stipoides</i>	Weeping Grass	Viro tube	0.3	Spreading
<i>Poa labillardierei</i>	Tussock Grass	Viro tube	1	0.6
<i>Themeda australis</i>	Kangaroo Grass	Viro tube	1.2	0.6
Turf				
Canberra Blend	Turf		N/A	N/A
Standard Dryland Grass	Turf/Verge	Seed	N/A	N/A

Character



Materials



Planting



1 Spectator seating

6 Bench Seat

11 *Acer x freemanii* 'Autumn Blaze'

2 Shared path

7 Multi Activity Games Arena (MUGA)

12 *Fraxinus pennsylvanica*

3 Community Sporting Facilities

8 Floodlit courts

13 *Chrysocephalum apiculatum*

4 Riparian Corridor

9 Timber Boardwalk

14 *Hardenbergia violacea*

5 Community Oval

10 Floodlit sportsfield

15 *Lomandra 'Tanika'*



Green Link 1 Concept Plan 1:1000



Green Link 2 Concept Plan 1:1000



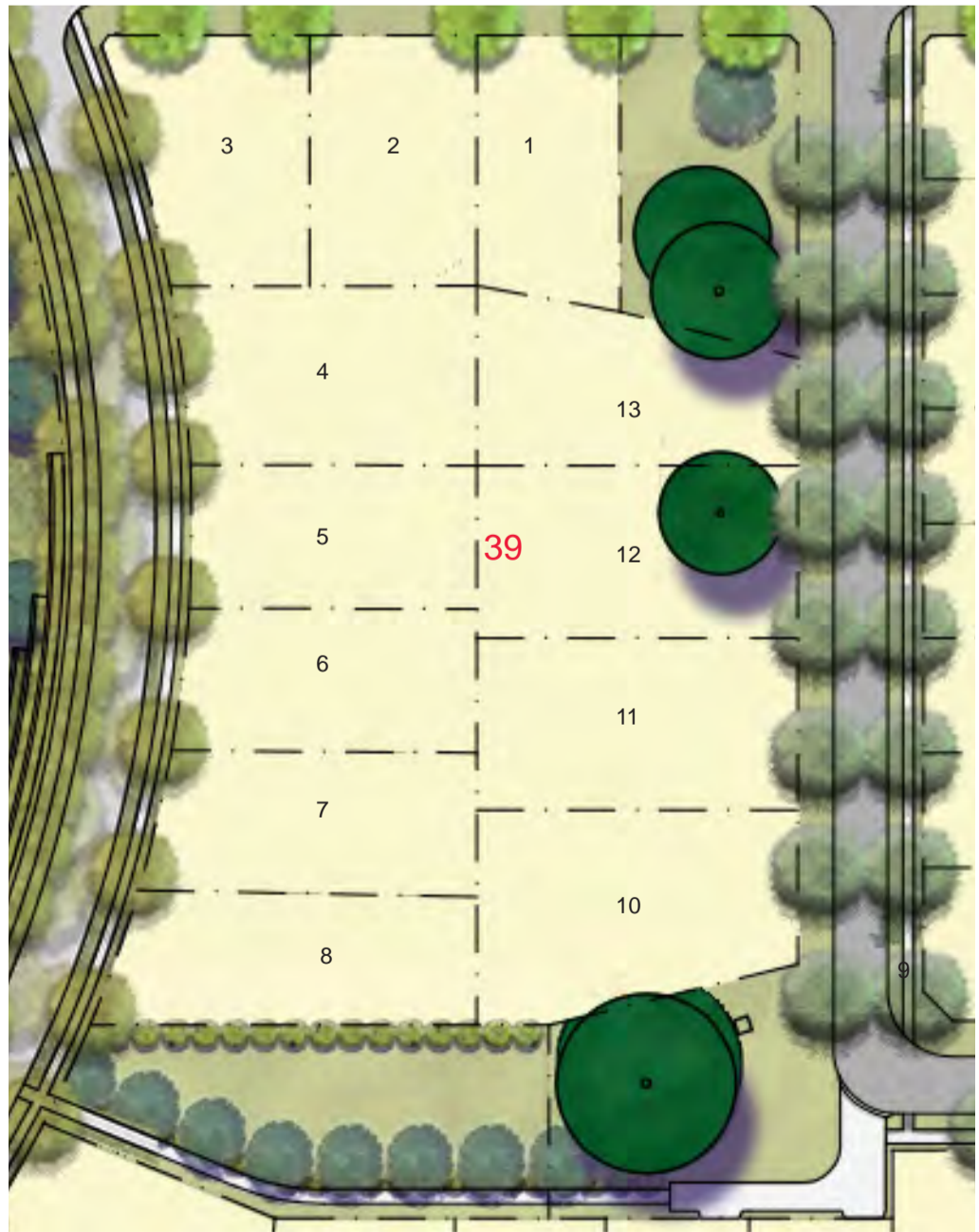
Green Link 3 Concept Plan 1:1000



Green Link 4 Concept Plan 1:1000



Green Link 5 Concept Plan 1:1000



Verge 1 Concept Plan 1:1000  
Verge 2 - Refer to L021 Nangi Pimble



Neighbourhood 2

Green Links and Widened Verges -  
Concept Plan



G	Development Application	28.09.17	AJ
F	Development Application	22.03.17	JB
E	Development Application	15.03.17	JB
D	Development Application	20.02.17	JB
C	90% Draft - For Review	25.01.17	JB
B	Draft - For Review	12.01.17	JB
A	Draft - For Review	21.12.16	JB
no.	revision	date	initial

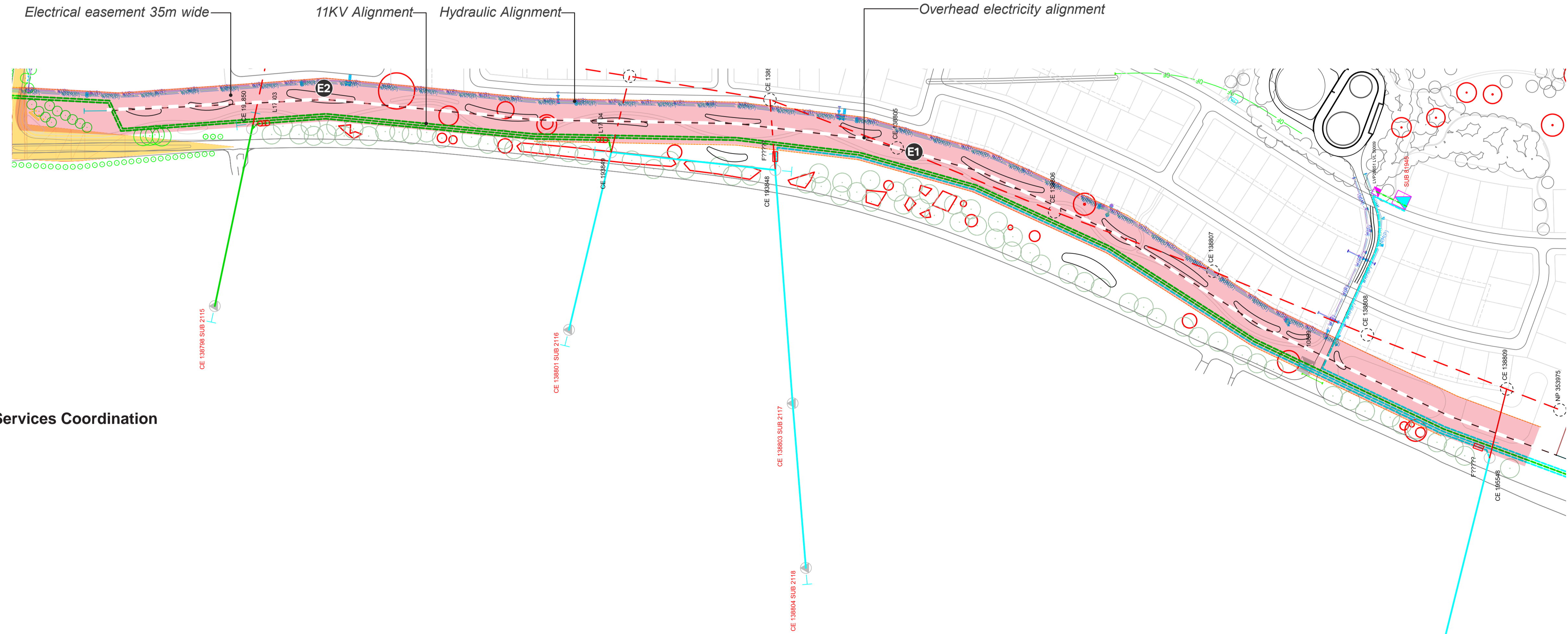
Title	Googong Neighbourhood 2 Development Application
-------	--

Prepared for	Googong Township Pty Ltd
Prepared by	AECOM

Date	28.09.17
Size	A1
Drawing no.	L030
Scale	-



Concept Plan



Services Coordination



Neighbourhood 2

Old Cooma Road Buffer Planting  
Concept Plan

Key	
1	Main Entry
2	2.5m wide sharepath
3	Feature entry sign and sculpture
4	Native Shrub Planting - max height 3m
5	Walkway to Nangi Pimble
6	Dryland grass mix
7	Nangi Pimble
8	Biorention Basin
Trees	
T1	Tree mix (Eucalyptus melliodora, Eucalyptus albens, Eucalyptus blakelyi)
E1	Overhead electricity alignment
E2	35m electrical easement



G	Development Application	28.09.17	AJ
F	Development Application	22.03.17	JB
E	Development Application	15.03.17	JB
D	Development Application	20.02.17	JB
C	90% Draft - For Review	25.01.17	JB
B	Draft - For Review	12.01.17	JB
A	Draft - For Review	21.12.16	JB
no.	revision	date	initial

Title	Googong Neighbourhood 2 Development Application
-------	--

Prepared for	Googong Township Pty Ltd
Prepared by	AECOM

Date	28.09.17
Size	A1
Drawing no.	L031
Scale	-



Neighbourhood 2

Old Cooma Road Buffer Planting  
Planting and Landscape Character



G	Development Application	28.09.17	AJ
F	Development Application	22.03.17	JB
E	Development Application	15.03.17	JB
D	Development Application	20.02.17	JB
C	90% Draft - For Review	25.01.17	JB
B	Draft - For Review	12.01.17	JB
A	Draft - For Review	21.12.16	JB
no.	revision	date	initial

Title	Googong Neighbourhood 2 Development Application
-------	--

Prepared for	Googong Township Pty Ltd
Prepared by	AECOM

Date	28.09.17
Size	A1
Drawing no.	L032
Scale	-

Planting Schedule

BOTANICAL NAME	COMMON NAME	POT SIZE	MATURE HEIGHT	MATURE SPREAD
Native (outside easement)				
Trees				
<i>Eucalyptus albens</i>	White Box	300mm anti spiral	20	10
<i>Eucalyptus blakelyi</i>	Blackely's Red Gum	300mm anti spiral	20	10
<i>Eucalyptus elata</i>	River Peppermint	300mm anti spiral	25-30	15
<i>Eucalyptus mannifera ssp. Maculosa</i>	Red Spotted Gum	300mm anti spiral	20	10
<i>Eucalyptus melliodora</i>	Yellow Box	300mm anti spiral	30	15
<i>Eucalyptus nortonii</i>	Bundy	300mm anti spiral	15	10
<i>Eucalyptus polyanthemos</i>	Red Box	300mm anti spiral	20	10
Shrubs (with easement)				
<i>Bursaria spinosa</i>	Sweet Bursaria	150mm	3	3
<i>Callistemon linearis</i>	Narrow Leaved Bottlebrush	150mm	3	3
<i>Grevillea sericea</i>	Silk Spider Flower	150mm	2	1.5
<i>Kunzea ericoides</i>	Burgan	150mm	2	2
<i>Westringia fruticosa</i>	Coastal Rosemary	150mm	1.5	1.5
Grasses and groundcovers				
<i>Dianella caerulea 'Aranda'</i>	Aranda Flax Lily	150mm	0.3	0.3
<i>Grevillea langira 'Mt Tamboritha'</i>	Grevillea langera 'Mt Tamboritha'	150mm	0.3	1
<i>Hardenbergia violacea</i>	False Sarsparilla	150mm	0.5	0.6
<i>Lomandra 'Tanika'*</i>	Tanika Mat Rush	150mm	0.5	0.6
<i>Poa poiformis 'Kingsdale'</i>	Kingsdale	150mm	0.5	0.5

Character



Trees



Shrubs



1 Dryland grass

6 *Eucalyptus albens*

11 *Bursaria spinosa*

2 Share path

7 *Eucalyptus elata*

12 *Callistemon linearis*

3 Overhead electricity

8 *Eucalyptus blakelyi*

13 *Grevillea sericea*

4 Easement

9 *Eucalyptus polyanthemos*

14 *Kunzea ericoides*

5 Share path

10 *Eucalyptus mannifera ssp. maculosa*

15 *Westringia fruticosa*